

User Guide of Energy Saving Tuya Bluetooth Motor

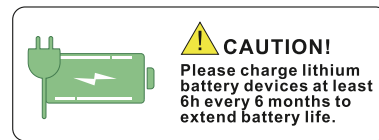
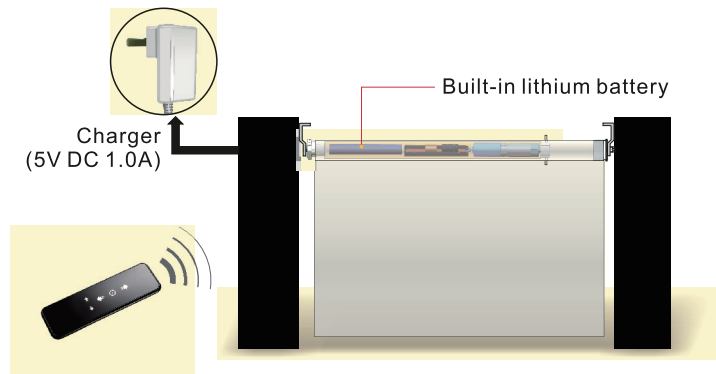
I. Features

- Energy Saving Patent.
- Built-in Rechargeable Lithium Battery Pack.
- It has automatic correction function for the displacement generated by braking.
- The built-in control parts of motor are sealed well for better safety.
- It's easy to switch the mode between inching and interlock and control operation direction.
- Electronic limits setting, 6 limits can be set (2 end limits and 4 middle limits).
- Short circuit protection & open circuit protection for sensor.
- Built-in low power Bluetooth module and APP intelligent control function.



II. Application

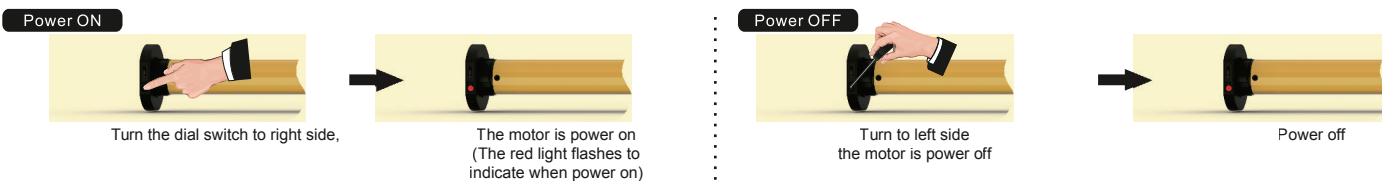
It can be fully charged within 4 hours, Please unplug the charger when fully charged.



III. Operation Instruction

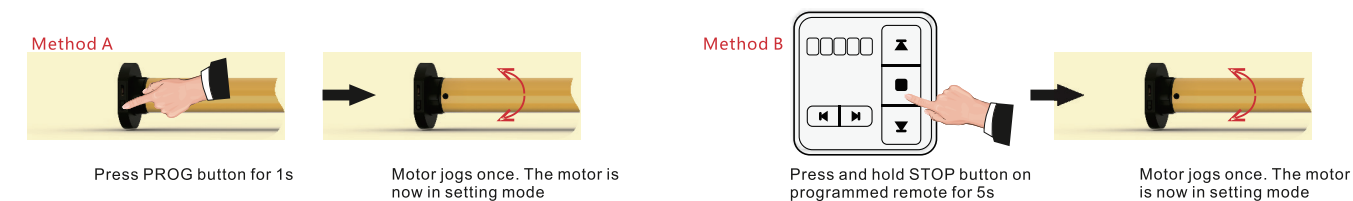
1. Power ON/OFF

* After switching off power, the motor will not be able to receive remote signals.

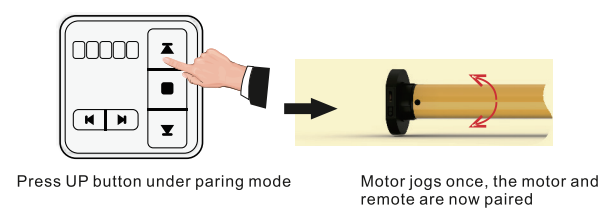


2. Programming Preparation

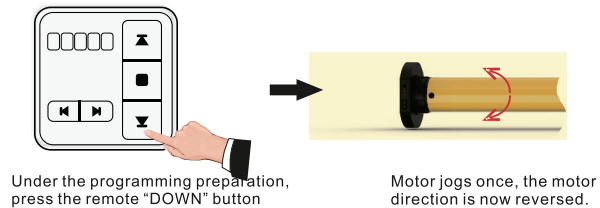
* If there is no action in 10 seconds, the motor will exit programming automatically.



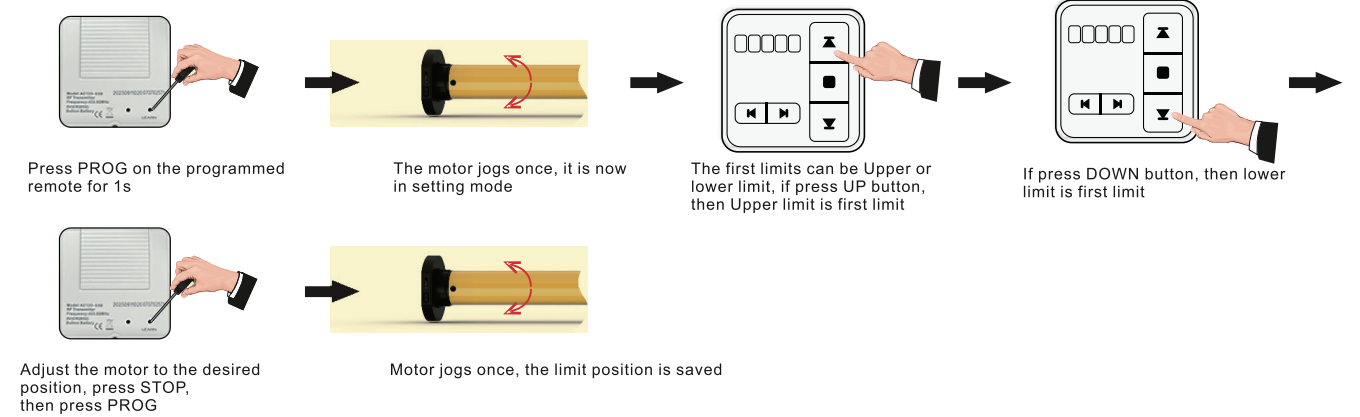
3. Pairing remote



4. Change Direction

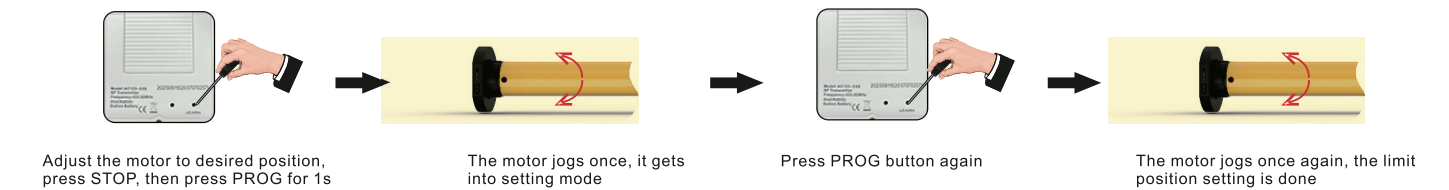


5. First limit position setting

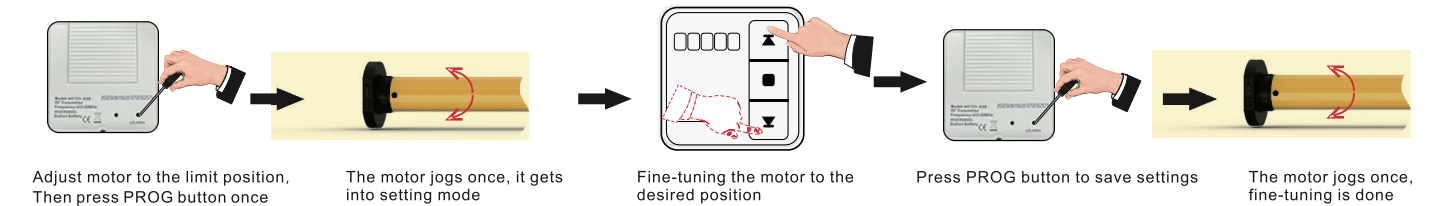


6. Other limit position setting

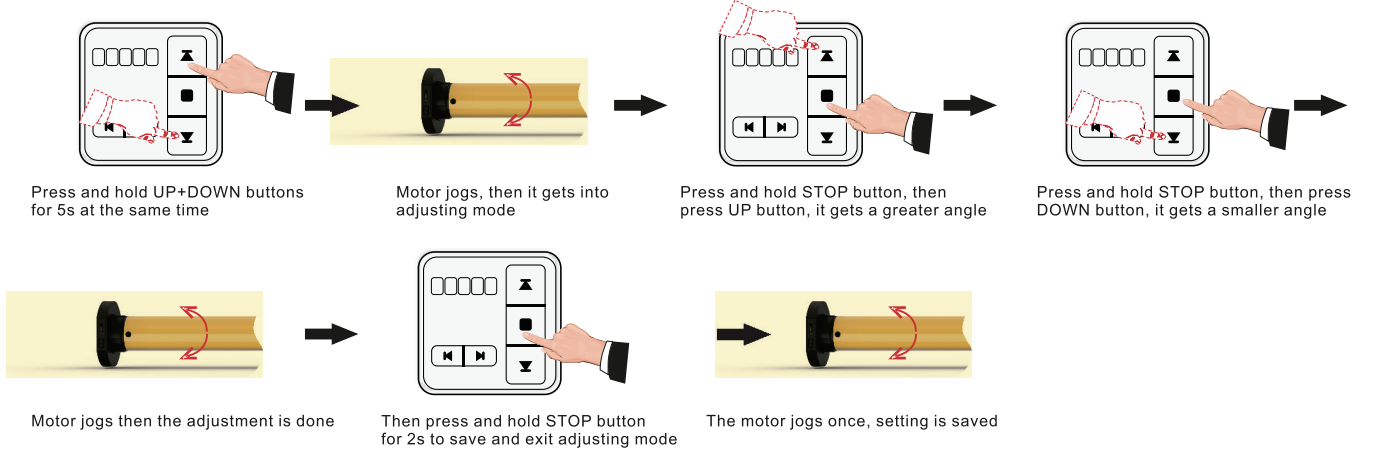
* If there's no any action within 30's, the motor will exit from limit position preparation automatically



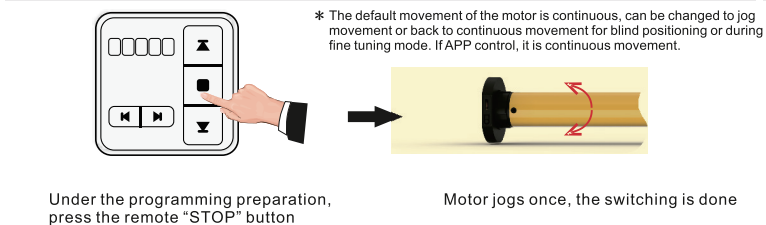
7. Limit position fine-tuning



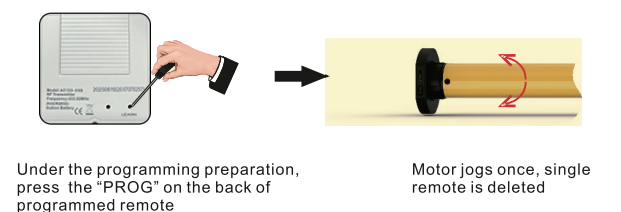
8. Tilt angle adjustment (Special for Zebra blinds, Shangri-la blinds etc.)



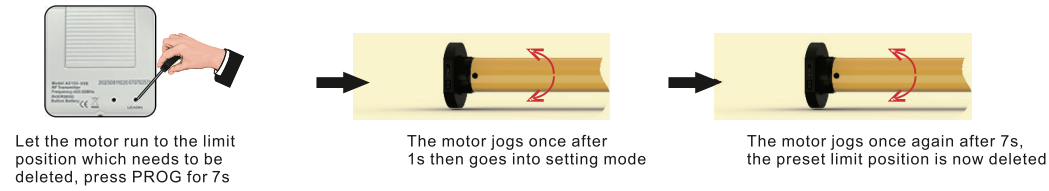
9. Jog movement & Continuous movement switching



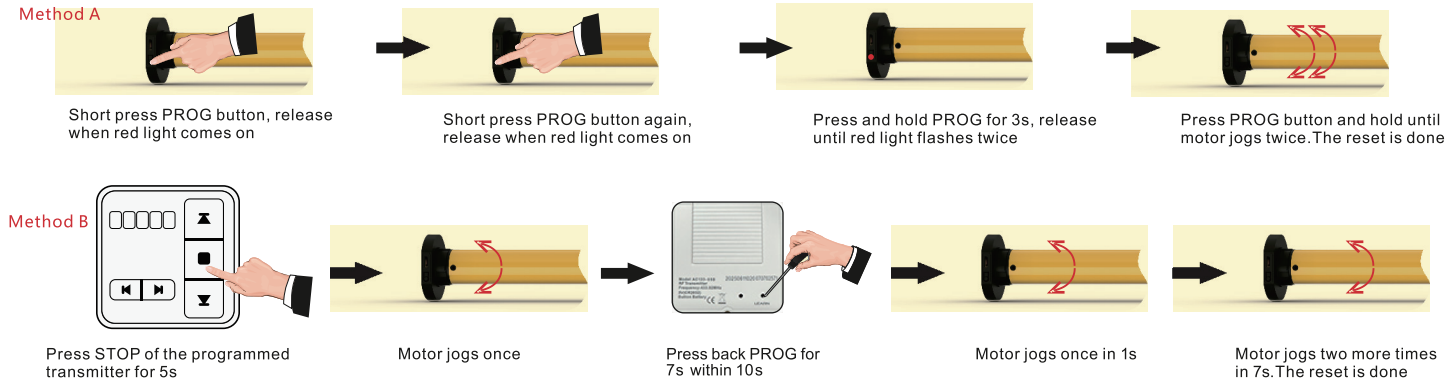
10. Delete Single Code



11.Delete the limit position



12.Reset motor * Make sure the interval between every actions less than 1s



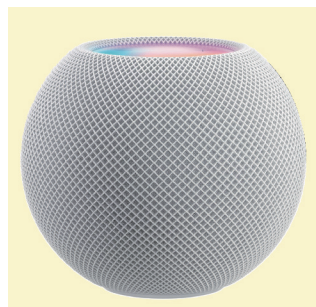
13.Supplemental Instruction

- The first and second position are Upper/Lower limit positions. Other four are intermediate positions.
- After the Upper/Lower limit position are set, all the intermediate positions must be set between the Upper and Lower limit.
- The Upper and Lower limit position can only be fine-tuned once set. It can only be removed by resetting the motor.
- Press the UP or DOWN button once and the motor will move to the next pre-set limit position. When the upper position has been reached, the Up button will be unresponsive. When the lower position has been reached, the Down button will become unresponsive.
- Press and hold the UP or DOWN button until the indicator on the programmed channel flashes twice, release, then the motor will move to the Upper or Lower limit position without stopping at any intermediate position.
- If battery is low to 6.2V, red light will flash, motor will switch to jog mode. If low to 5.5V, motor will stop working.
- The light turns to red during recharging. It turns to green when it is full recharged.

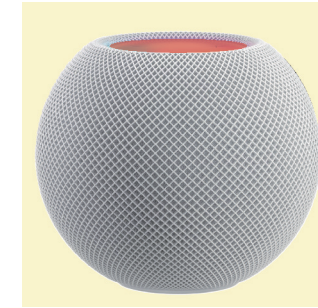
14 .APP instructions

1. Connect HomePodmini

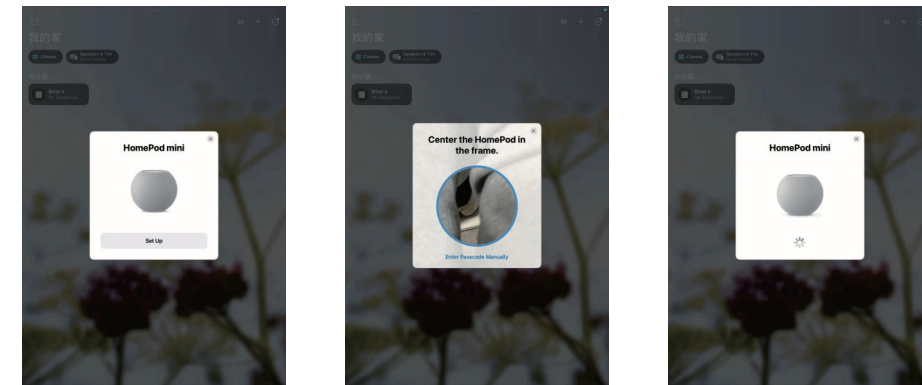
- Download from Apple Store Home;
- Connect the mobile phone to HomePodmini;
- Use your mobile phone to connect to the hotspot (the mobile phone can be used as a hotspot, please note that a 5G network is required), and turn on Bluetooth at the same time;
- Press the top of HomePod Mini to reset it Unplug HomePod and plug it back in, wait 10 seconds;
- Once powered on, wait about 5 seconds and place your finger on the top of HomePod until the white rotating light turns red.



f. After pressing and holding the top of HomePod, the rotating white light on the top of the device will turn red. And Siri will tell you that HomePod is about to reset. prompt in Siri.

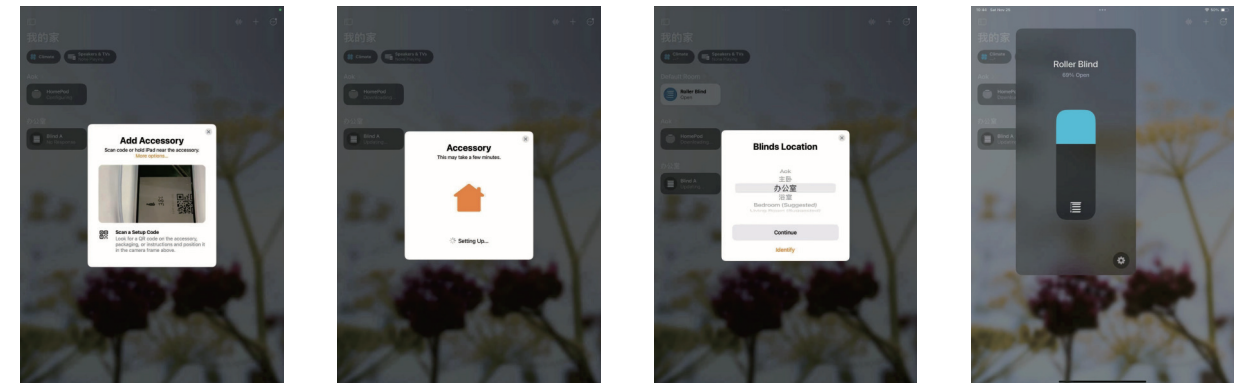


g. After you are about to reset HomePod or HomePod Mini, you will hear three beeps.
h. Wait for the phone to automatically search for HomePodmini, and click Settings



2. Add Matter device

- Press 4 short and 1 long buttons on the motor until the green light flashes.
- Click Add Accessories in the upper right corner of Home, scan the distribution network QR code to connect the motor



IV.Trouble Shooting

Item	Problem	Matter	Shooting
1	The motor doesn't work and no any move	A. Power is cut off B. Shortage voltage protection C.Incorrect installation leads to motor sticking	A. Switch it on by button B. Start the motor after charging it for 6 hours C.Check and make sure all parts are installed properly
2	The motor stops suddenly during operation	A.Shortage voltage protection B.Protect the motor when encounter obstacle	A.The motor will resume to work after being charged B.Check if there is something stuck or overloading
3	APP can not be connected with Motor	A.Bluetooth is not open B.Motor is connected by other mobile phones	A. Switch on the bluetooth of mobile phone B.Reset bluetooth and connect again